

TOWN OF RIVERHEAD
COMMUNITY DEVELOPMENT AGENCY
RESOLUTION NO. 10
**DESIGNATES 9 ACRE FUTURE EXPANSION AREA FOR EAST END
AIRCRAFT MUSEUM**

ADOPTED: 04/06/99

MEMBER CARDINALE offered the following resolution, which was seconded by **MEMBER KENT**.

WHEREAS, the Grumman Corporation has played an integral role in the history of Long Island and particularly the Town of Riverhead.

WHEREAS, the East End Aircraft Corporation, a Local not-for-profit-organization, has succeeded in arranging the loan of a Grumman built F-14 tomcat from the U.S. Navy to the Town of Riverhead, to be erected at the former Naval Weapons Industrial Reserve Plant; and

WHEREAS, East End Aircraft has applied for and been approved as an eligible Naval Museum Organization and has plans to obtain additional Grumman aircraft; and

WHEREAS, East End Aircraft is fully funded for construction of the one acre monument site; and

WHEREAS, the Town of Riverhead has by CDA Resolution 18, July 7, 1998, designated a one acre site, expandable to 10 acres, for the expressed intent of establishing the F-14 monument and the future East End Aircraft Museum; and

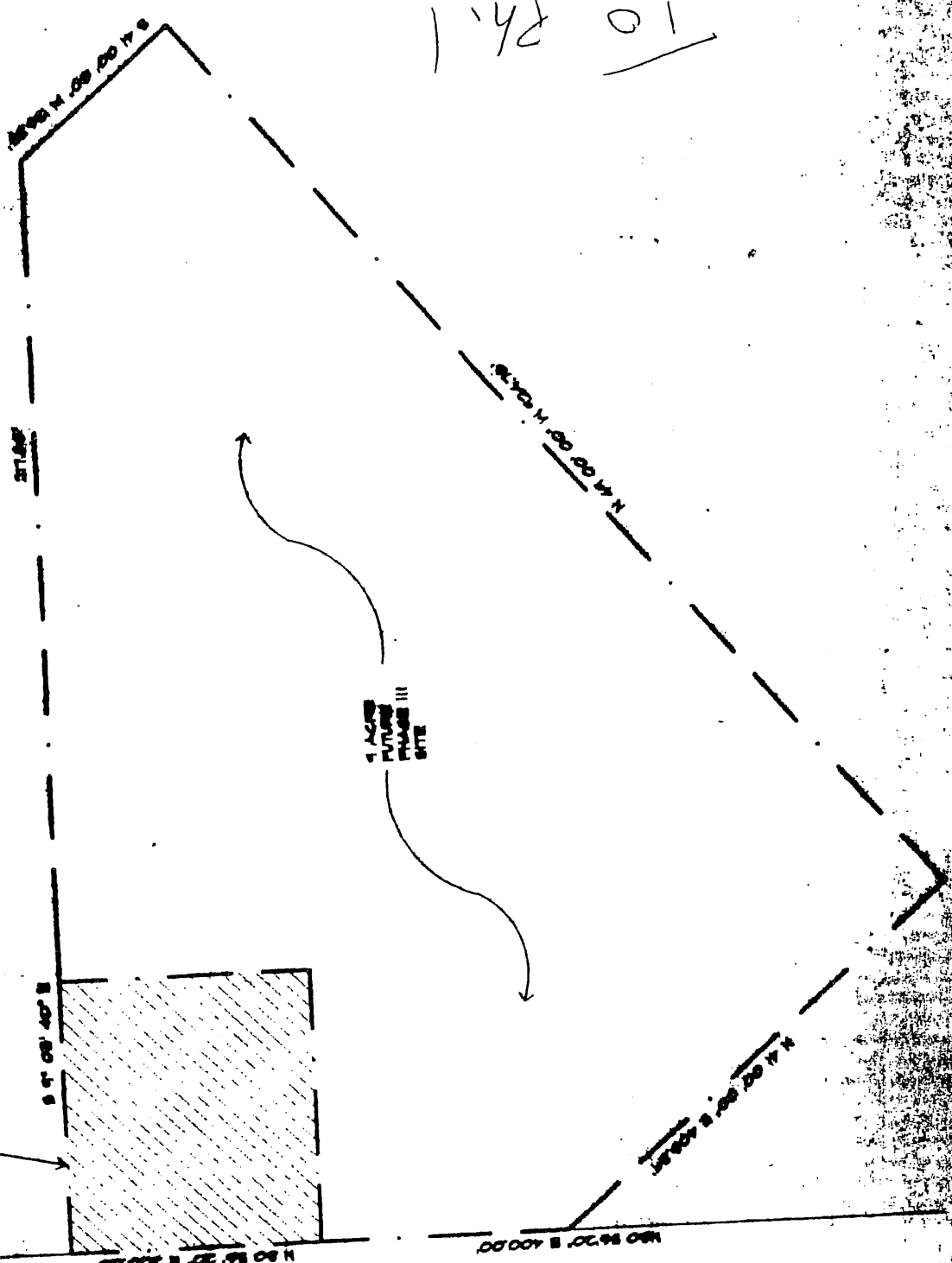
WHEREAS, the Town of Riverhead has by CDA resolution 4, February 2, 1999 designated the initial one acre site for the undertaking of the design and engineering of the F-14 monument; and

WHEREAS, the CDA board desires to proceed to identify the future 9 acre expansion site directly abutting and adjoining the initial 1 acre designation in order for East End Aircraft Corporation to properly engineer and design the one acre monument site as it would relate to the future 9 acre expansion area subject to the future decisions of the Town Board regarding zoning of the site and;

WHEREAS, Land surveyor John Ehlers has prepared a map designating the 9 acre expansion site to the already designated 1 acre site for the establishment of the East End Aircraft Museum, specifically the F-14 monument by East End Aircraft Corporation; and

THEREFORE, BE IT RESOLVED, that the CDA hereby designates a nine acre expansion site abutting and adjoining the initial 1 acre site designation for the expressed intent of future expansion pursuant to the map prepared by John Ehlers attached.'

10 P. 1
From State



1 ACRE
FUTURE
PLANT
SITE

N.Y.S. RT. 25