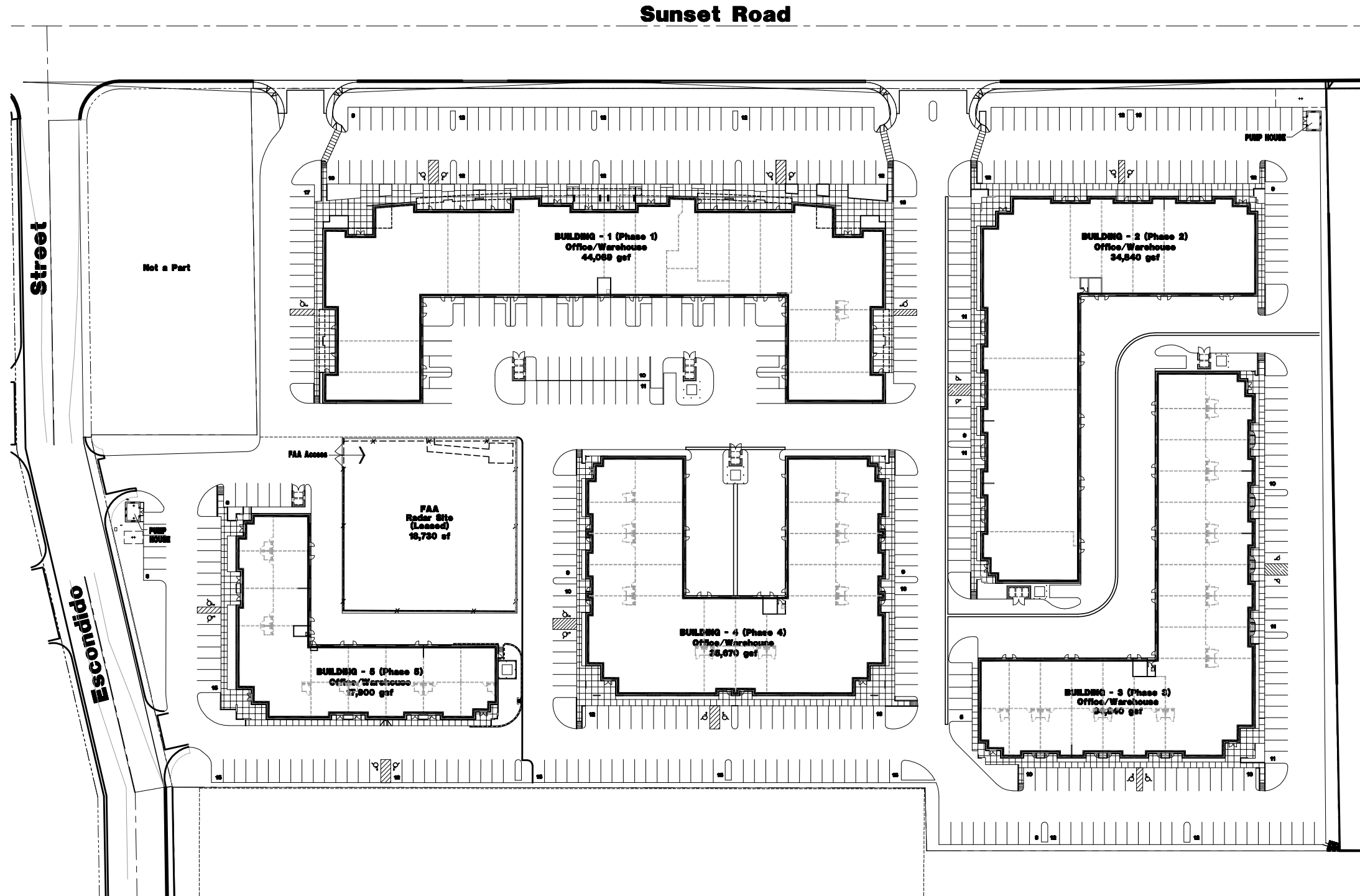


Note:
This Plan is Conceptual in Nature and no Guarantee of its Accuracy is implied. The Owner/Architect reserves the Right to make Design Modifications without notice. All Colors, Dimensions, Sizes and Architectural Features are Conceptual and subject to Change.



SITE INFORMATION

ZONING
MD

AREA Calculations: (Approximate, to be Verified)

Gross Area:	578,534 sq.ft.	13.28 acres
Net Area:	486,454 sq.ft.	11.16 acres

BUILDING 1 AREAS

Vacant	2,006 sf
American Video Surveillance	1,756 sf
Showtickets.com	9,080 sf
Wheels in Motion	1,769 sf
Natural Edge	2,259 sf
Easy Street Realty	5,098 sf
Cheetah Wireless	1,680 sf
Cheetah Wireless	917 sf
Desert Valley Mortgage	2,3487 sf
Primerica	985 sf
Allstate	1,429 sf
Go Natural	1,763 sf
Help-U-Sell	1,720 sf
Vacant (Unit 17, 18)	7,335 sf
Barbeque Islands	1,756 sf
IMDP	2,006 sf
Common Area	189 sf
Total	44,089 sf

BUILDING 2 AREAS

Air Synergy Labs, Inc. (unit #s 1, 2 & 3)	5,871 sf
Ericson Group (Unit # 4)	1,960 sf
Sunshine Flooring Unit (Unit # 5)	1,960 sf
Netco (Unit # 6)	1,590 sf
Sunshine Flooring Unit (Unit #s 7, 8 & 9)	9,452 sf
Cookie Zoo (Unit # 10)	1,826 sf
Sunshine Flooring Unit (Unit #s 11, 12, 13 & 14)	8,934 sf
Sunshine Flooring Unit (Unit #s 15 & 16)	3,128 sf
Common Area	209 sf
Total	34,840 sf

BUILDING 3 AREAS

Total	34,880 sf
--------------	------------------

BUILDING 4 AREAS

Total	35,670 sf
--------------	------------------

BUILDING 5 AREAS

Total	17,501 sf
--------------	------------------

GRAND TOTAL	166,980 sf
--------------------	-------------------

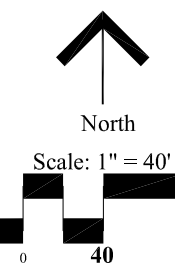
McCarran Sunset Center

Sunset and Escondido Street, Las Vegas, Clark County, NV

355 Triple Five Nevada Development Corp.
Las Vegas, Nevada 702-430-5800

Master Site Plan

Date: November 9, 2006
Project Number: 705056



PA Las Vegas, LLC
2230 CORPORATE CIRCLE, SUITE 200
HENDERSON, NEVADA 89074
702.990.9900 702.932.3222 fax

© COPYRIGHT 2006, PA LAS VEGAS, LLC