

# PUBLIC INFORMATION SESSION

RIVERHEAD AMPHITHEATER  
JULY 17, 2024

**SKOLNICK**  
ARCHITECTURE + DESIGN PARTNERSHIP



Department  
of State



**THIS DOCUMENT WAS PREPARED FOR THE NEW YORK  
STATE DEPARTMENT OF STATE WITH FUNDS PROVIDED  
UNDER THE BROWNFIELD OPPORTUNITY AREA PROGRAM**

**SKOLNICK**  
ARCHITECTURE + DESIGN PARTNERSHIP



**Department  
of State**



# REMARKS BY TOWN OF RIVERHEAD

**SKOLNICK**  
ARCHITECTURE + DESIGN PARTNERSHIP



Department  
of State



# STAKEHOLDER MEETING 04/15

## KEY TAKEAWAYS

### 1. THEMES

- **“DYNAMIC” “VIBRANT” “ACTIVE” OR “ACTIVATED” (26%), UNITY OR COMMUNITY (15%)**
- **OTHER RESPONSES: “SPECTACULAR,” “PROFESSIONAL,” “INSPIRING,” AND “INCLUSIVE.”**





# STAKEHOLDER MEETING 04/15

## KEY TAKEAWAYS

### 2. USAGE

- **COMMUNITY VIEWS THE AMPHITHEATER AS PRIMARILY FOR MUSIC PERFORMANCE, THOUGH WERE OPEN TO OTHER EVENTS LIKE THEATER, K-12 PERFORMANCES AND FITNESS/NATURE THEMED PROGRAMMING**
- **COMMUNITY WAS POSITIVE ABOUT PASSIVE USE. MOST OF THE RESPONSES (16) MENTIONED PICNICKING OR EATING LUNCH. OTHER COMMON RESPONSES INCLUDED SUNBATHING, READING, “RELAXING,” AND “HANGING OUT IN A RESPECTFUL WAY.”**
- **CONCERNS ABOUT LOITERING, CRIME AND VANDALISM**



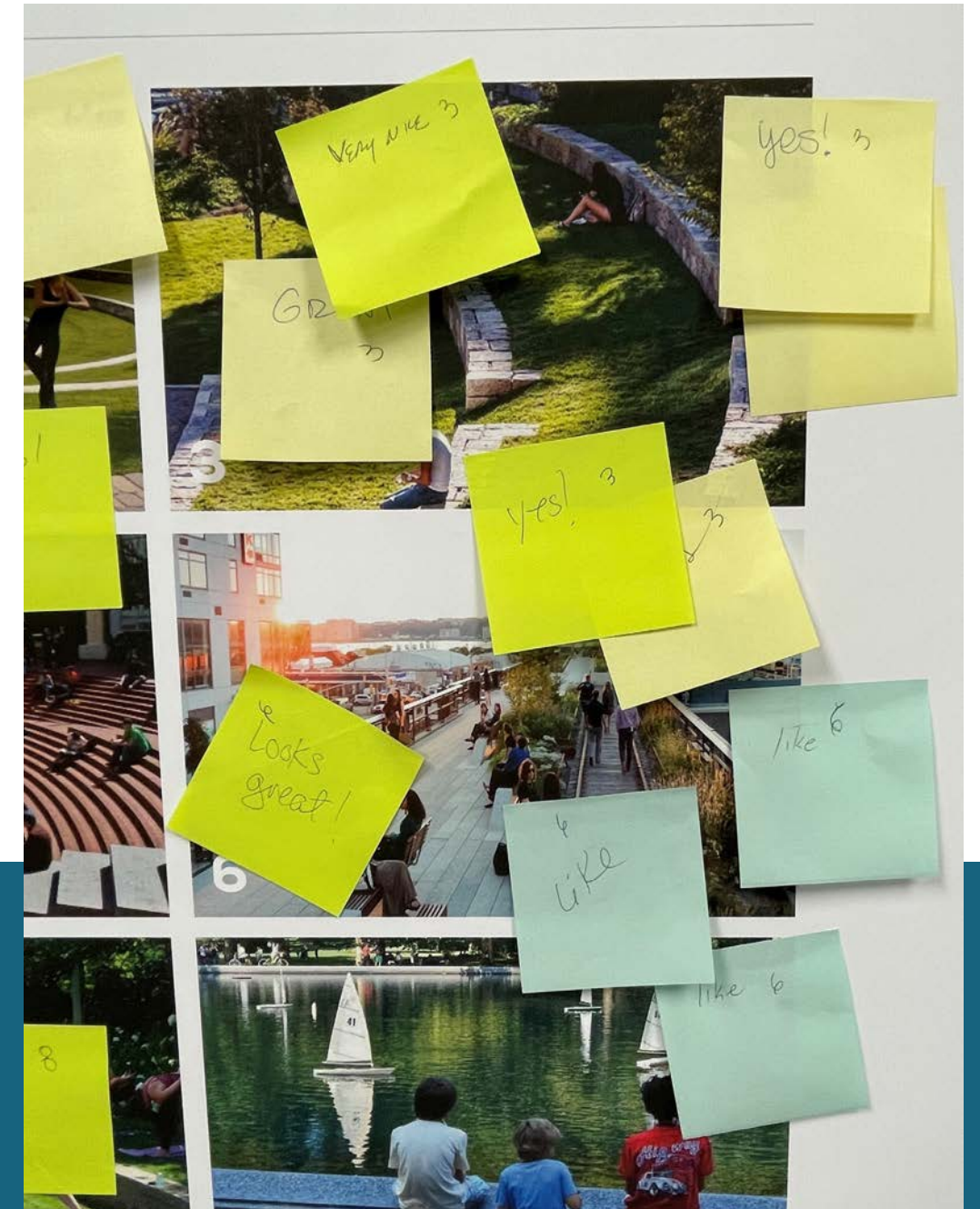


# STAKEHOLDER MEETING 04/15

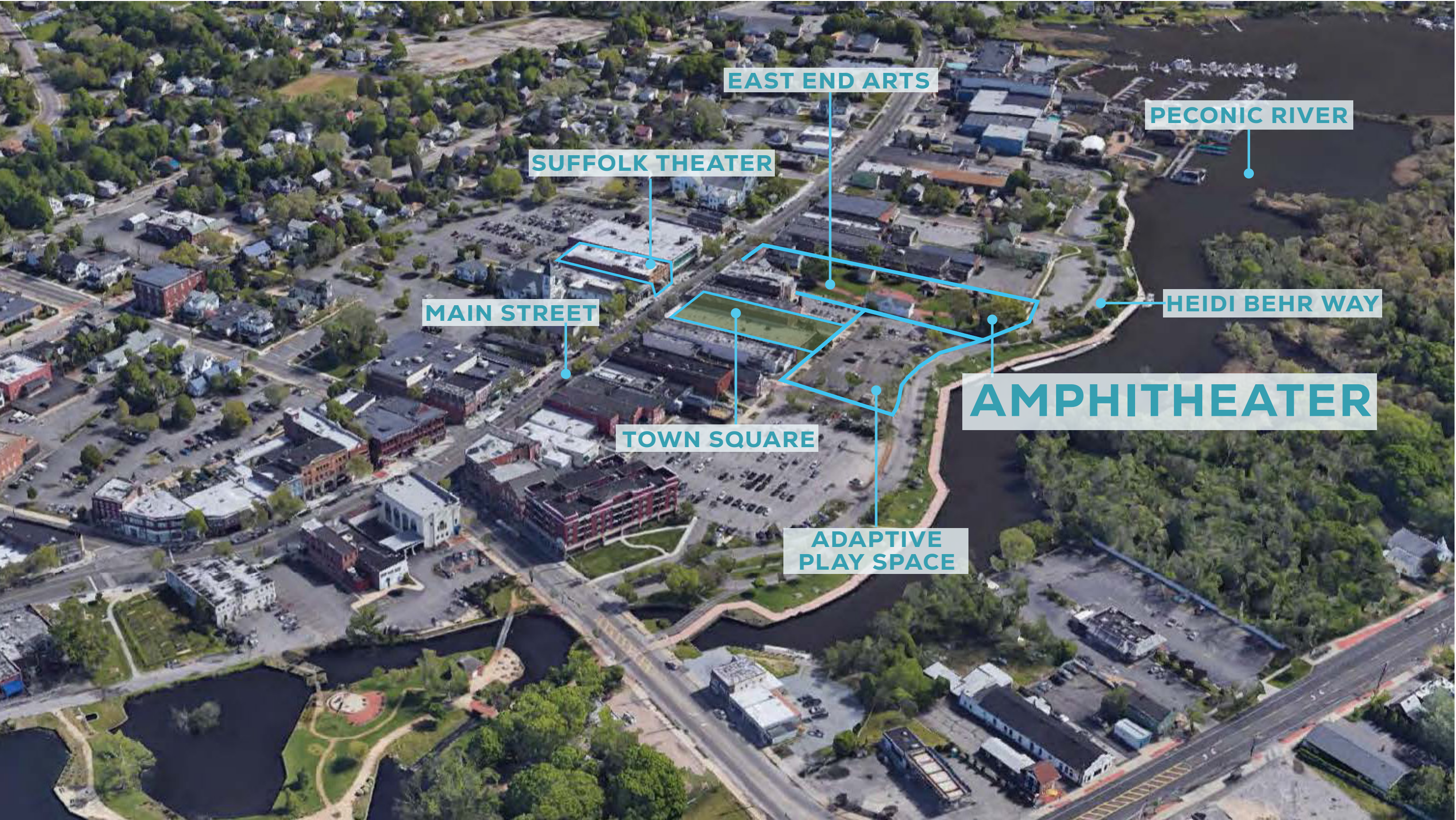
## KEY TAKEAWAYS

### 3. DESIGN

- **CREATE A PORTAL TO THE RIVER**
- **INCLUDE BACK OF HOUSE/AMENITIES FOR PERFORMERS**
- **BALANCE HARDCAPES AND GREENERY**
- **TIERED SEATING FOR FLEXIBILITY**















# AMPHITHEATER







## HOW CAN AN AMPHITHEATER CONTRIBUTE TO, AND SUSTAIN A VIBRANT RIVERHEAD DOWNTOWN?





ART  
MUSIC  
NEIGHBORS  
GATHERING

WHAT DEFINES THE NEEDS AND CHARACTERISTICS OF RIVERHEAD?





ACTIVITIES  
RIVER WALK  
FESTIVALS  
MARITIME LIFE



WHAT CONNECTS THE COMMUNITY TO THE PECONIC RIVER?





PLAY  
PICNICS  
EXERCISE  
RELAXING

WHAT OTHER COMMUNITY ACTIVITIES CAN AN AMPHITHEATER SUPPORT?



# AMPHITHEATER SEATING

# STAGE





## PLAN FOR OPERATIONAL SUCCESS



Type of Event	Revenue Type	Operational Effort / Expenses	Low	Medium	High
Summer Series: Local bands, tribute bands, movie nights	Free	Medium	10 shows	20 shows	30 shows
Community events: Local theater, local music school	Permitted	Low	5 events	9 events	13 events
Signature Concert: Nationally touring artist	Ticketed	High	0 events	1 event	2 events
Total events			15	30	45

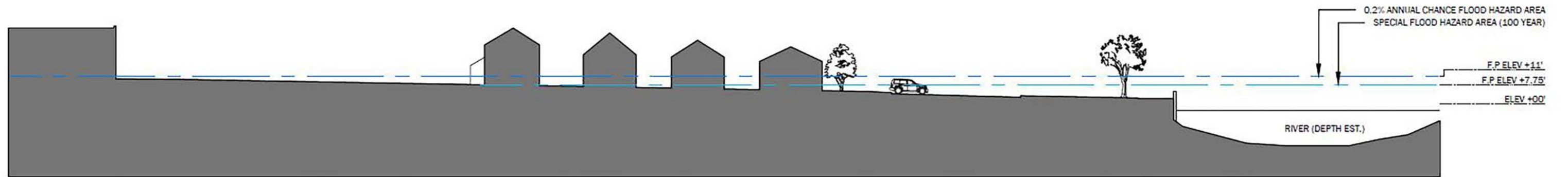
**PROGRAMMING - PRIMARILY FREE EVENTS, PLUS 1-2 TICKETED SHOWS**





## INCORPORATE CLIMATE RESILIENCE AND FLOOD MANAGEMENT





03\_SECTION THROUGH EXISTING EASTERN SIDE OF TOWN CENTER

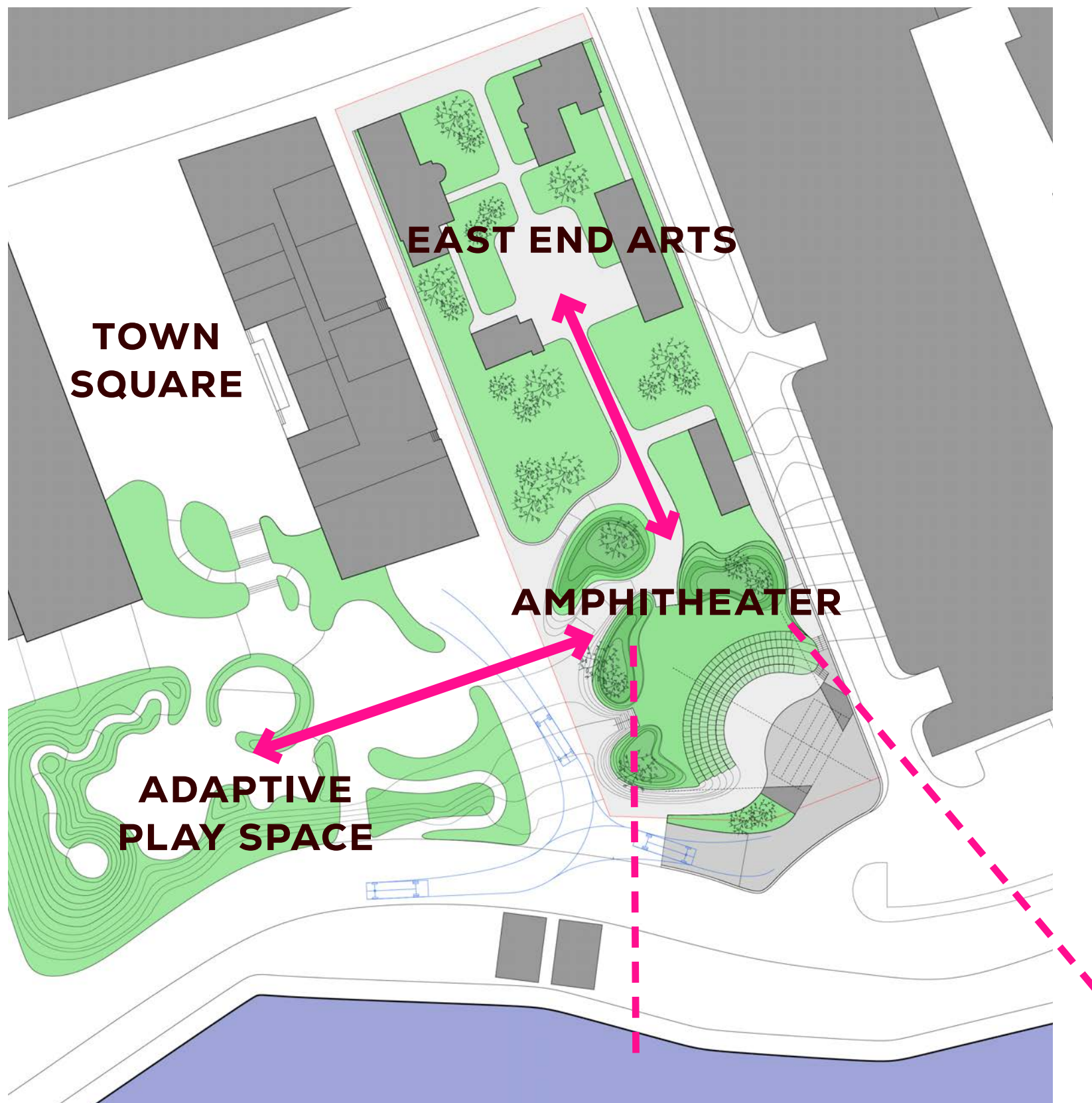


## INCORPORATE CLIMATE RESILIENCE AND FLOOD MANAGEMENT







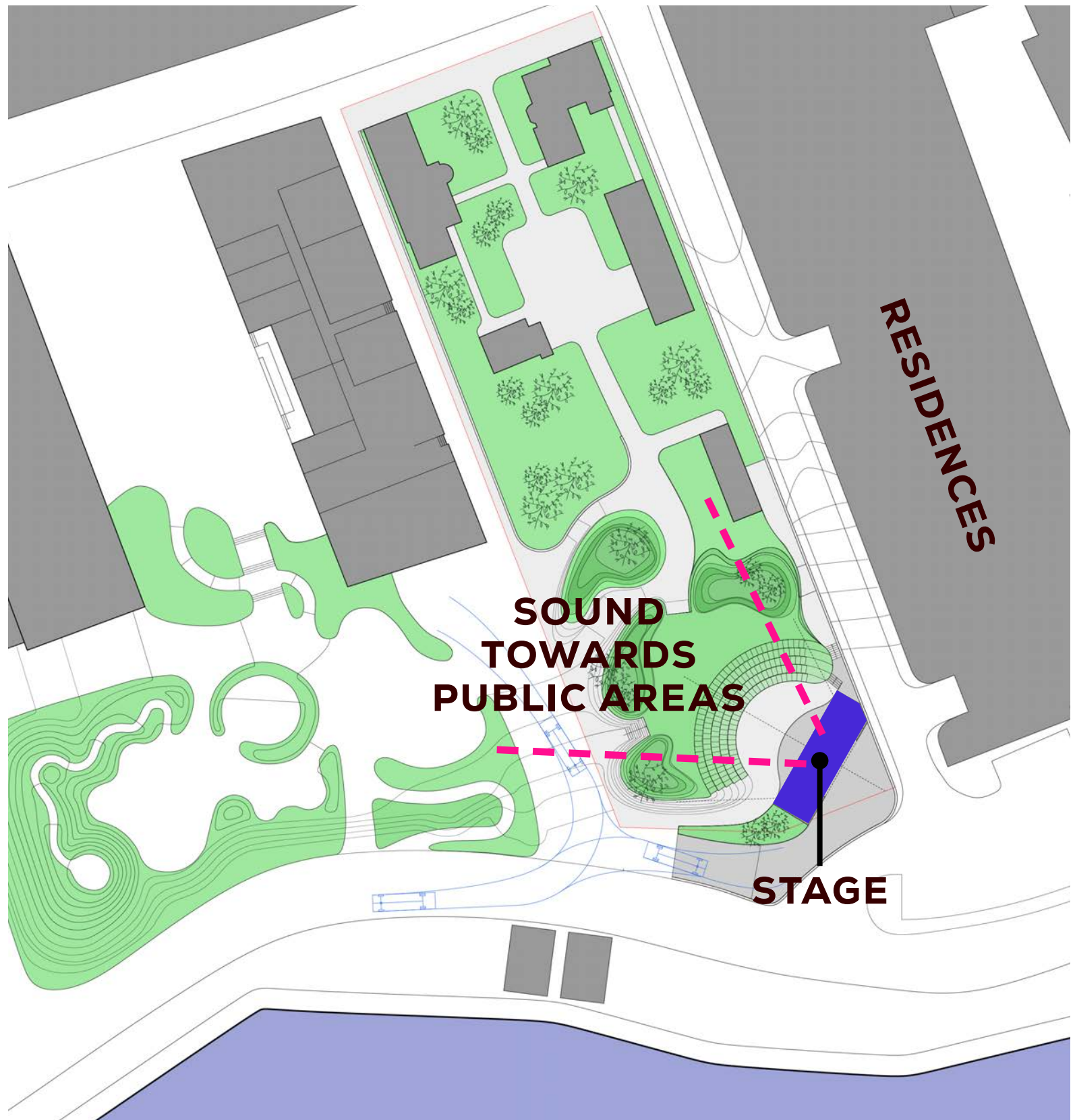


**VIEW TO THE RIVER**

**CONNECTION TO THE  
ADAPTIVE PLAY SPACE AND  
EAST END ARTS CAMPUS**

## AMPHITHEATER SITE AS CONNECTOR

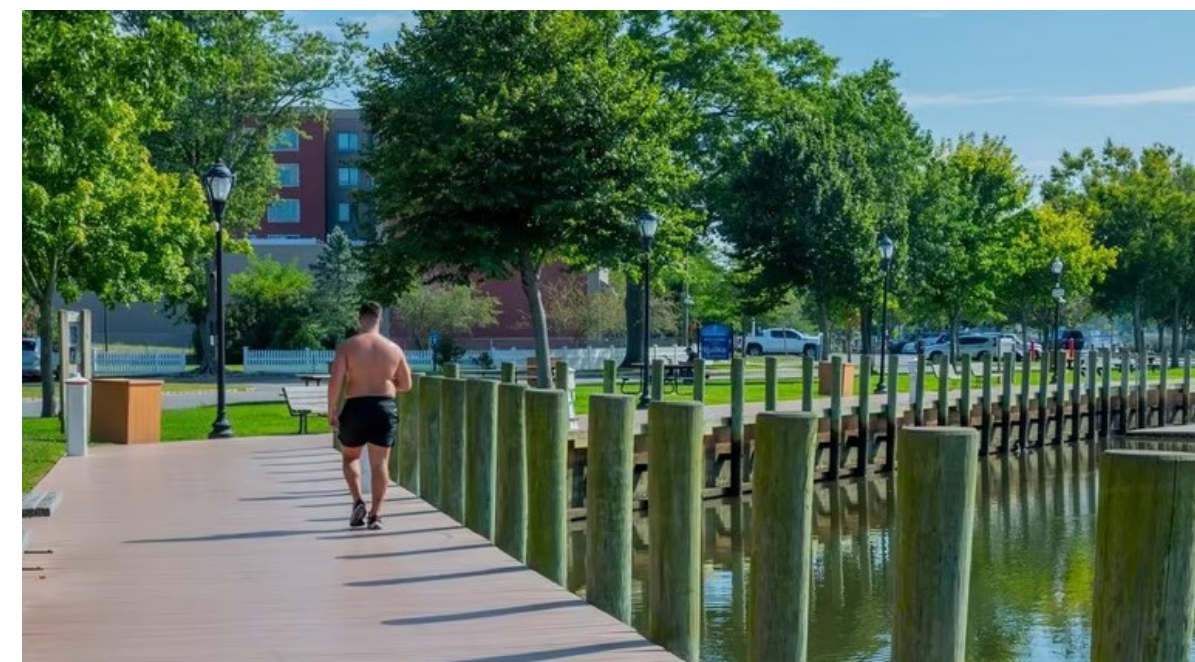
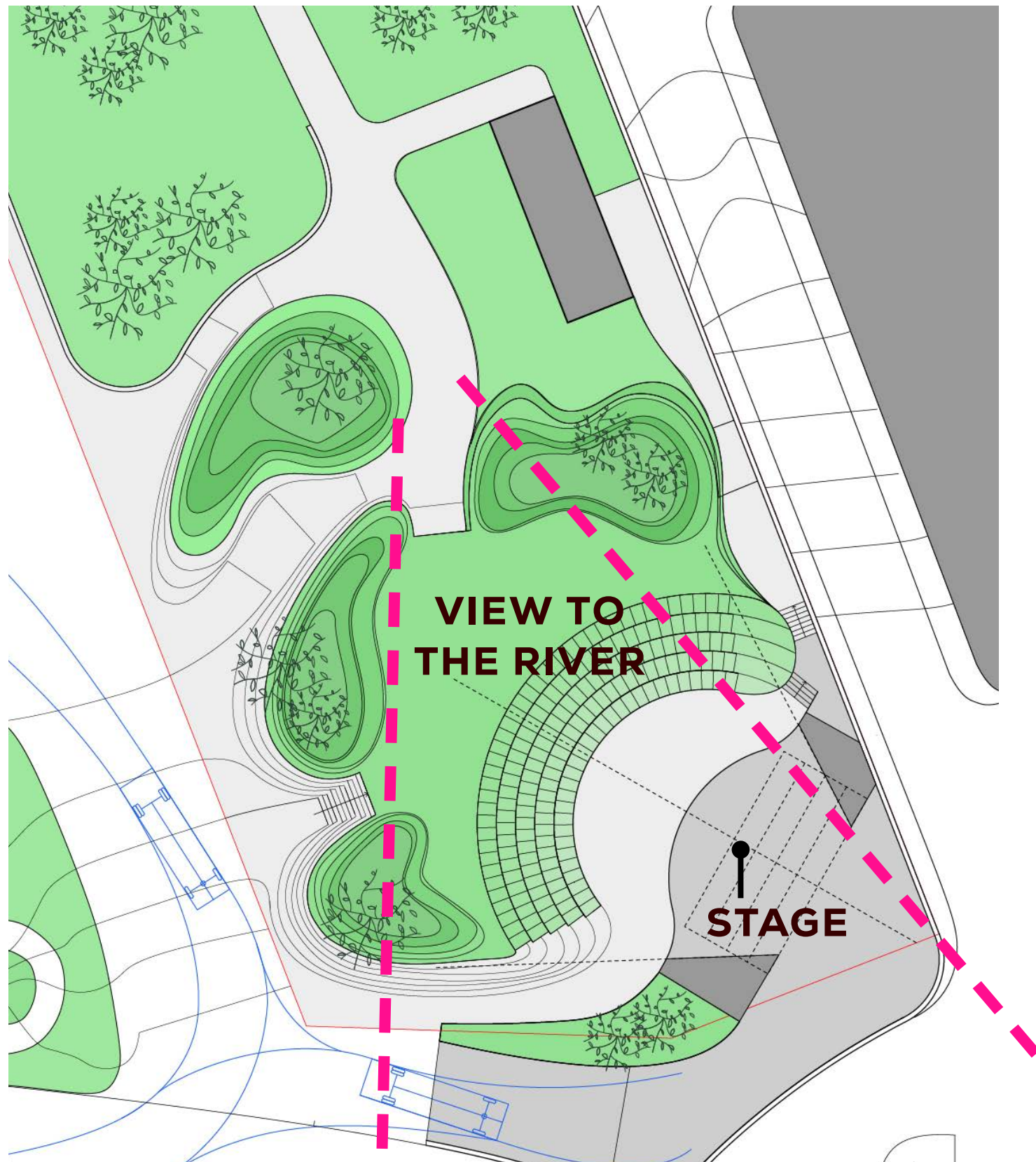




**UNOBSTRUCTED VIEWS OF  
THE RIVER**

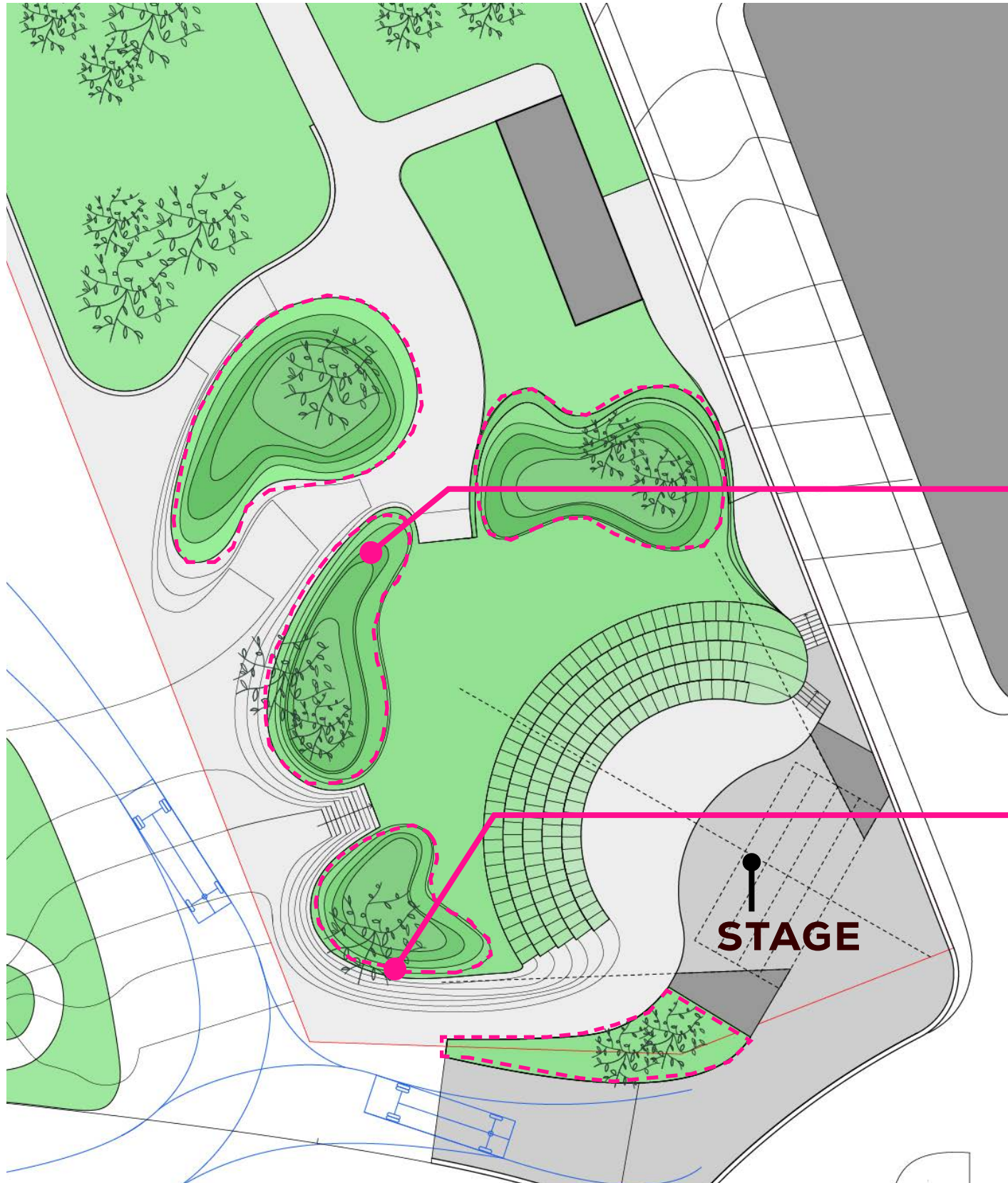
# ORIENTATION OF STAGE AND ACOUSTIC CONTROL





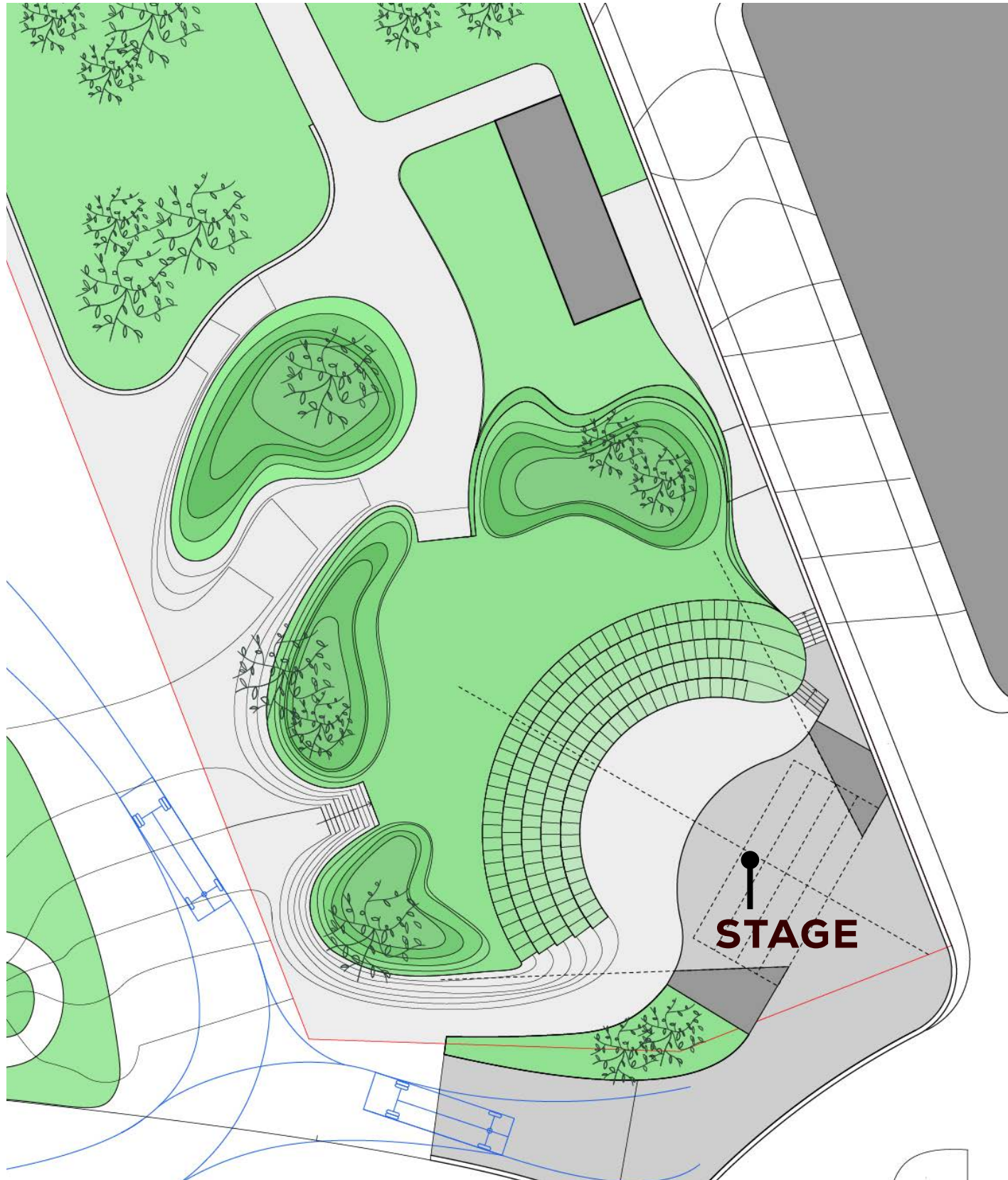
## CONNECT TO THE RIVER





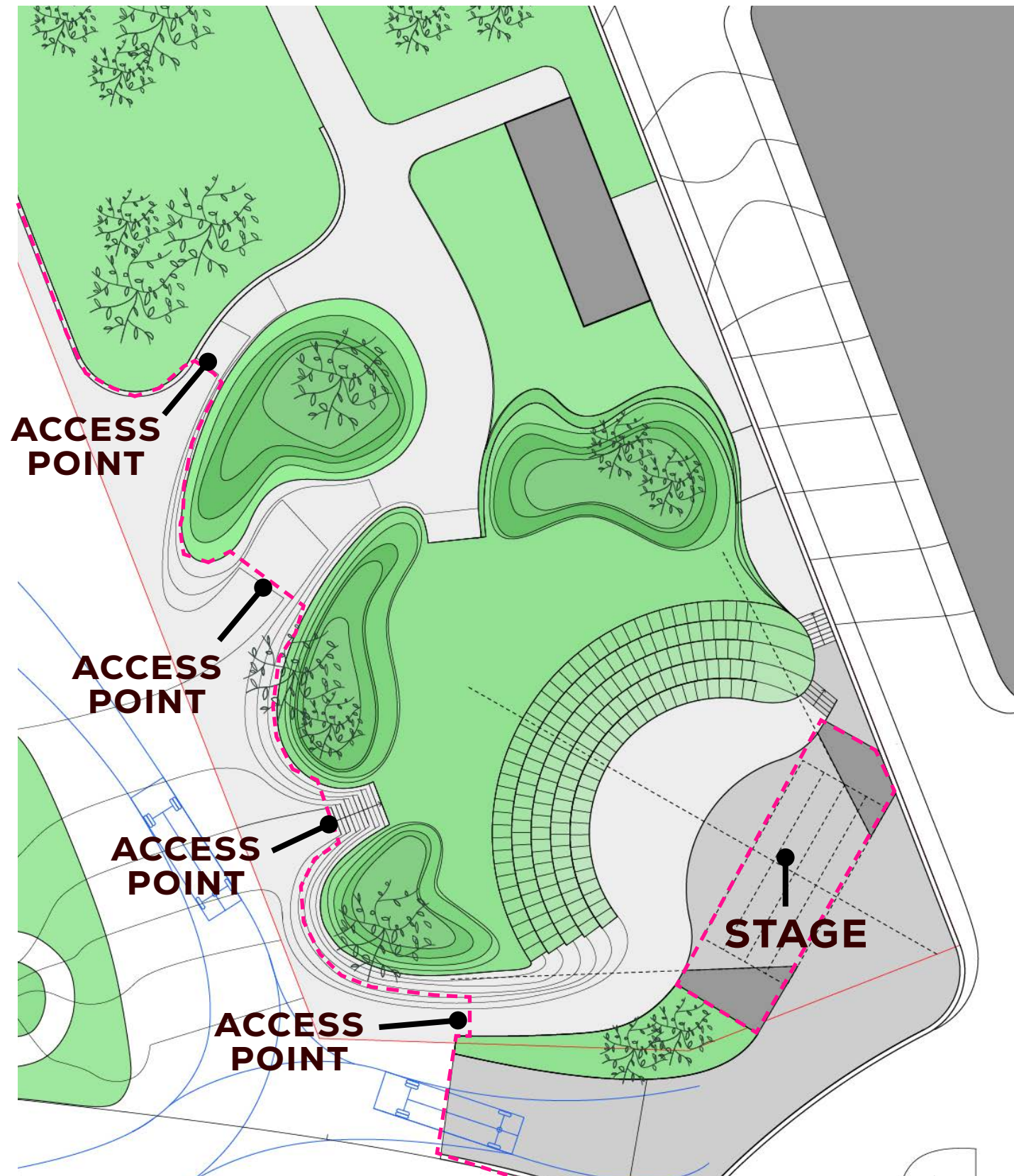
## CONNECT TO NATURE





## RESPOND TO RIVERHEAD'S MAIN STREET HISTORICAL CHARACTER





**MULTIPLE ACCESS / CONTROL POINTS  
FOR TICKETED EVENTS & SAFETY**

**ENCLOSED STAGE**

**GOOD LIGHTING**

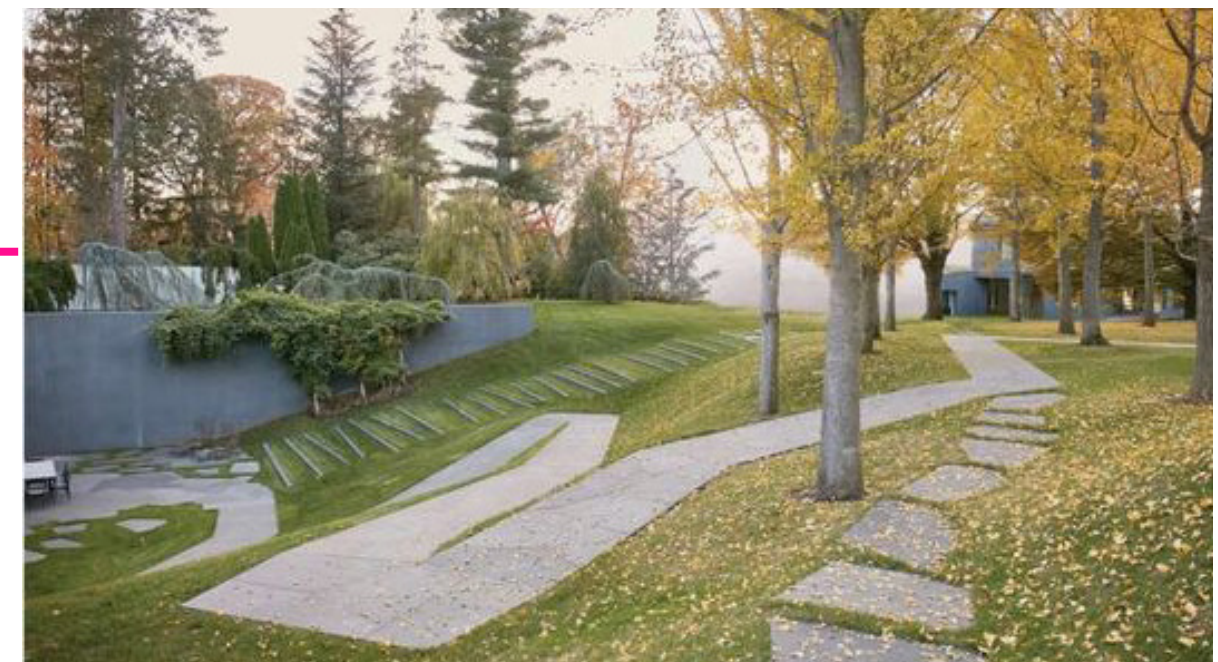
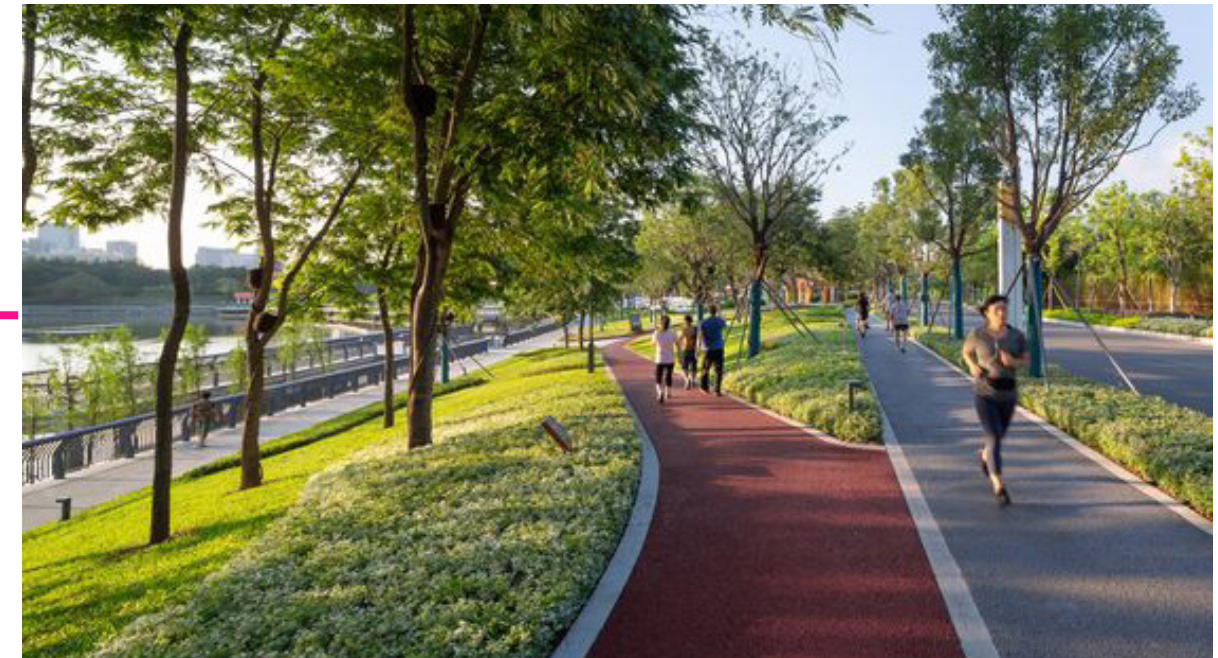
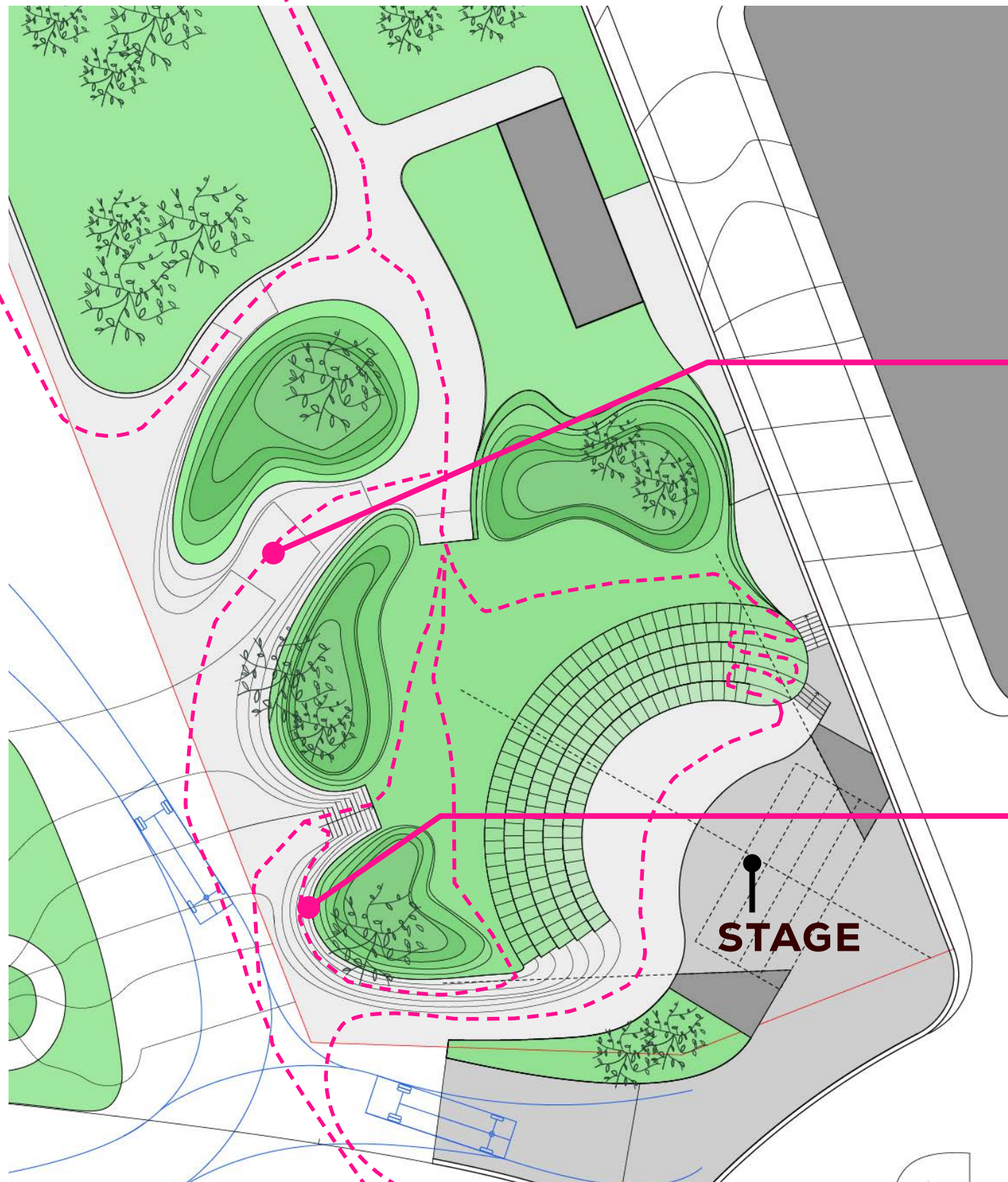
**CREATING AN INVITING AND SAFE SPACE**





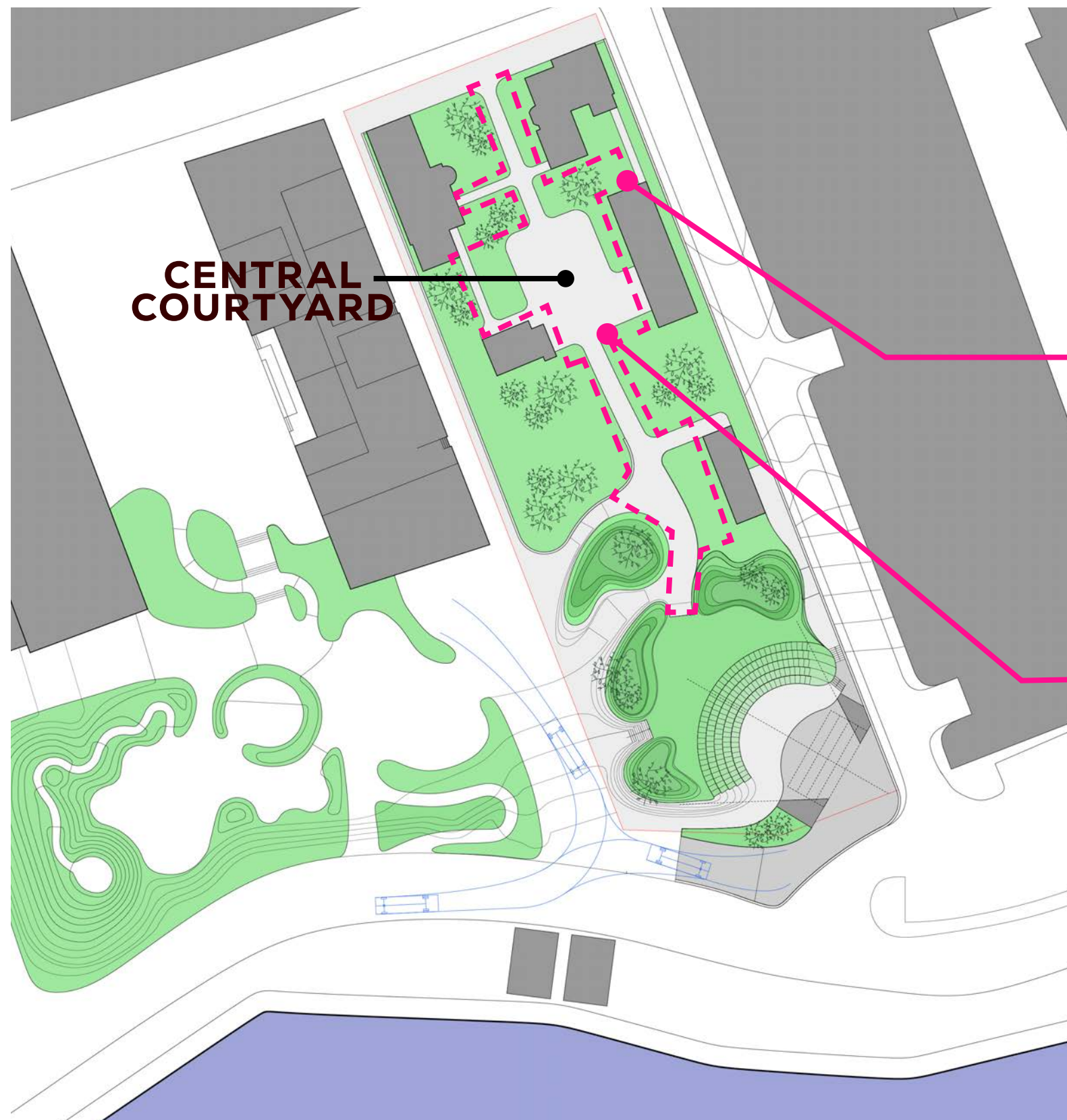
## PROVIDE PUBLIC RESTROOMS





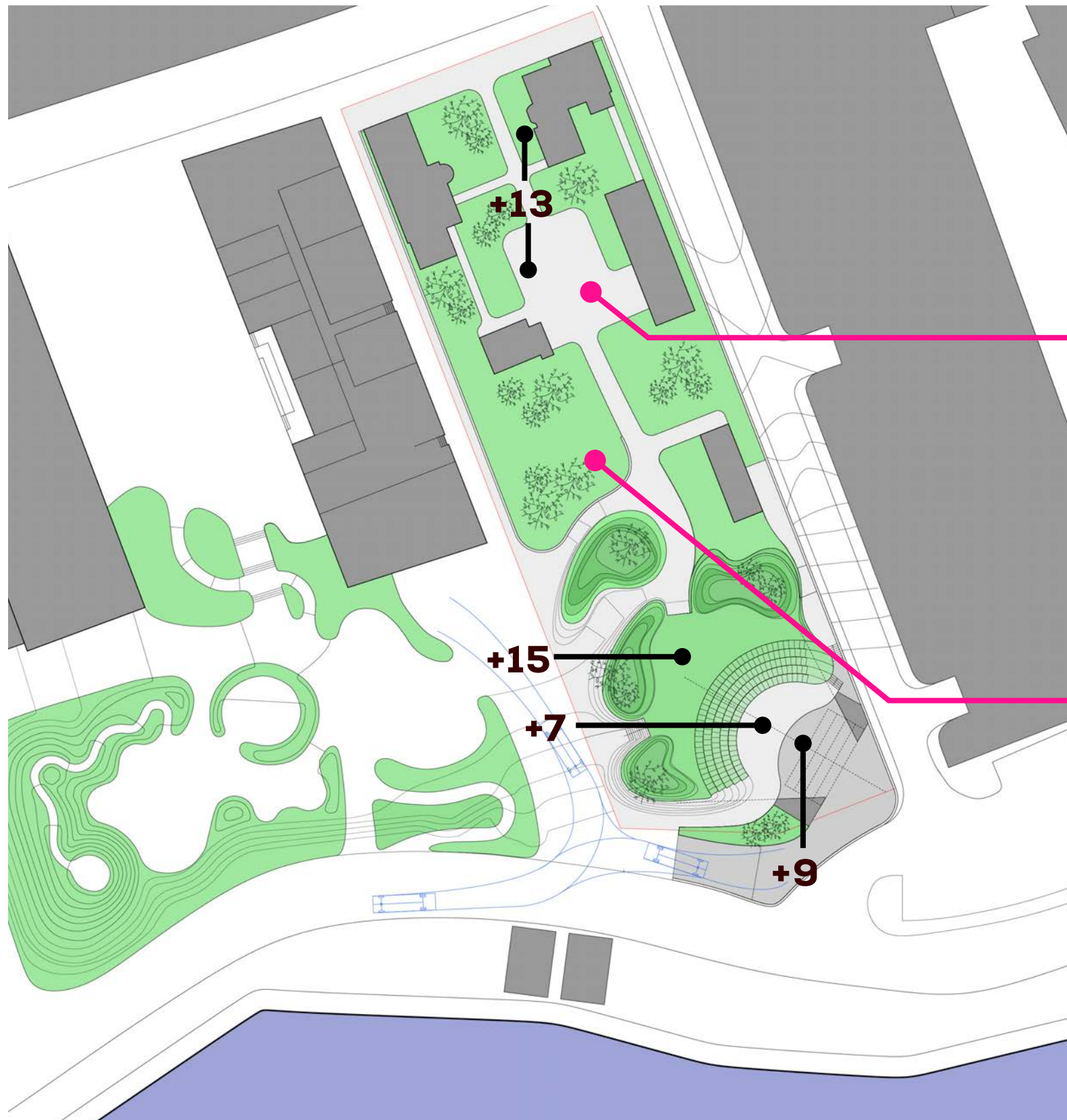
## ELEVATE ACCESSIBILITY FOR ALL





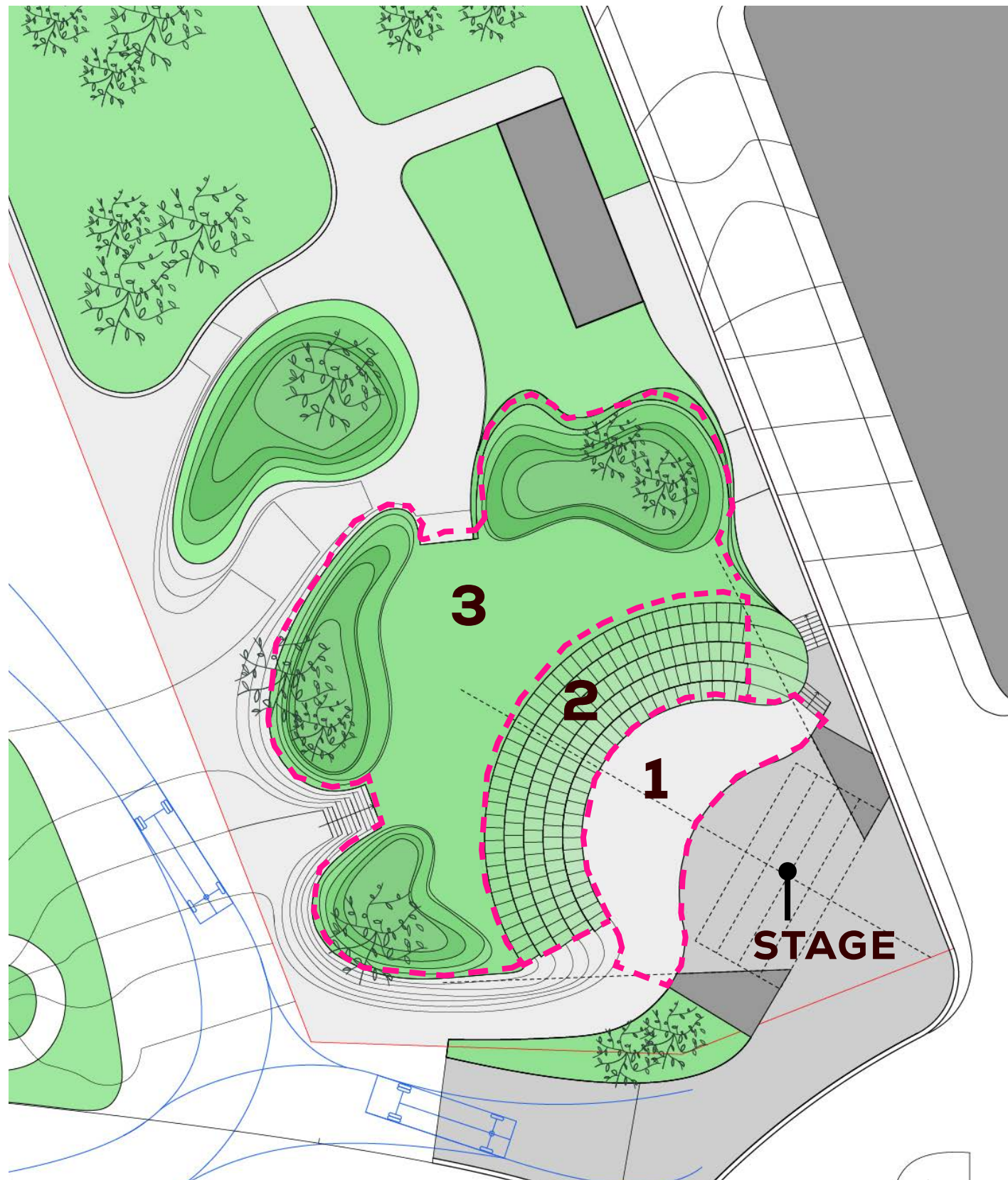
## ENHANCE THE EAST END ARTS CAMPUS





**LIFT AND RELOCATE EEA BUILDINGS OUT OF FUTURE SEA LEVEL RISE**

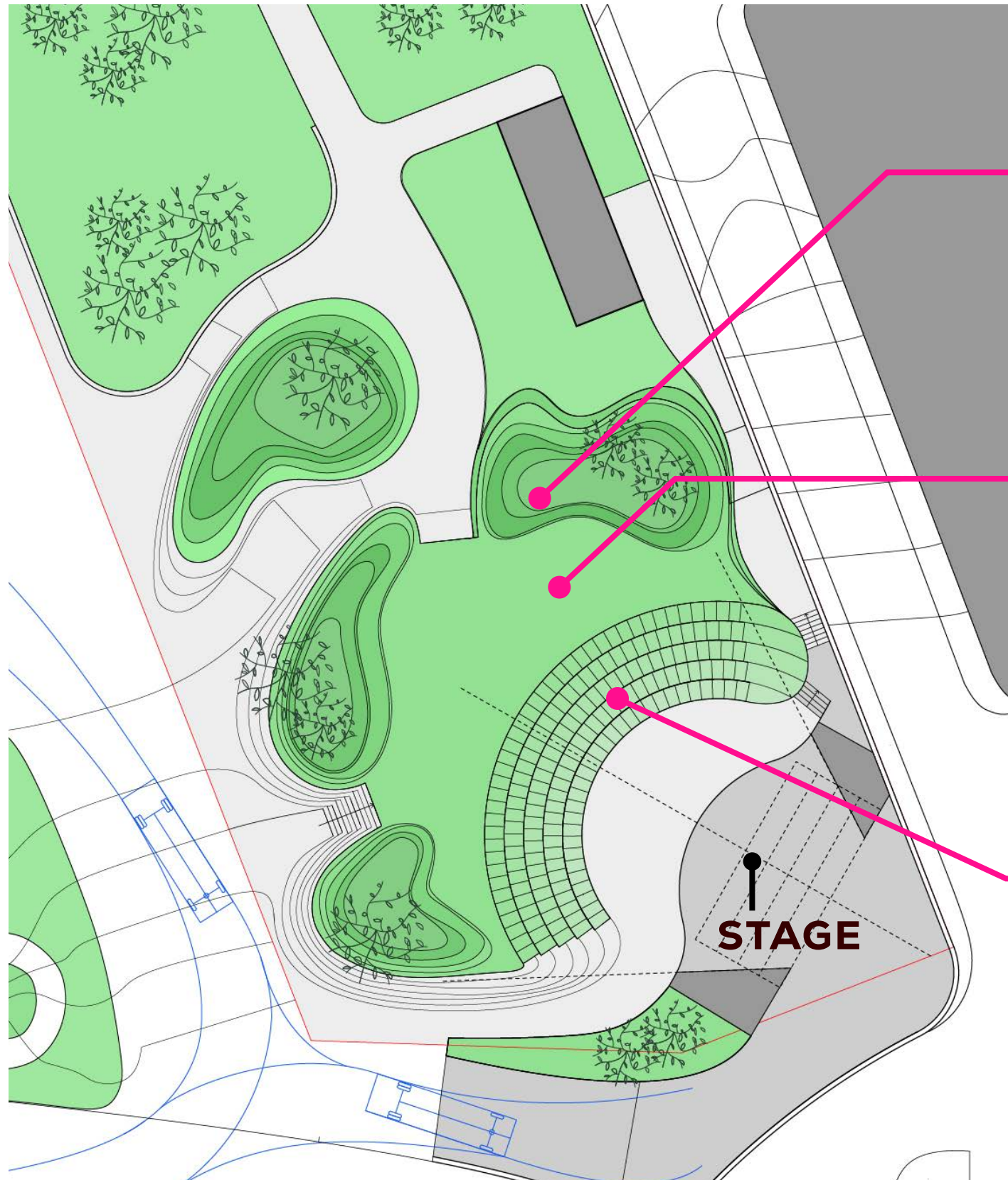




**MAX. 500 PEOPLE**  
**3 ZONES**

## ANTICIPATED AUDIENCE THROUGH REGIONAL MARKET TRENDS

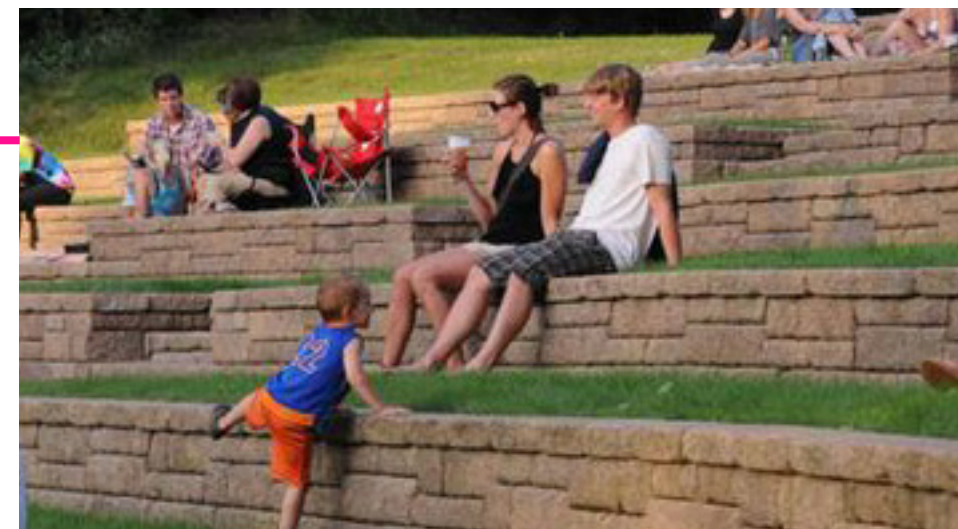




**HILLS**



**OPEN  
LAWN**



**STEPPED  
SITTING**

**OFFER VARIED SEATING**





PICNIC



DANCING

# PROVIDE FOR MULTIPLE USES





EXERCISE



MUSIC

**PROVIDE FOR MULTIPLE USES**





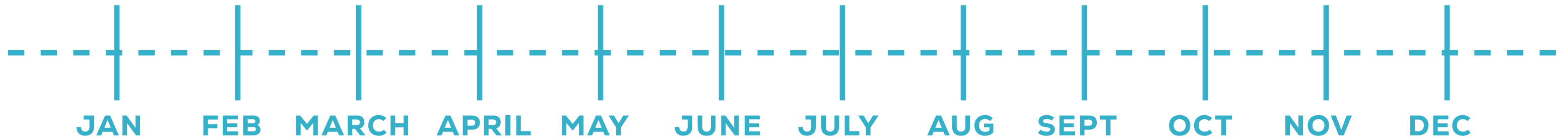
PLAY



LOCAL  
FAIRS

**PROVIDE FOR MULTIPLE USES**





## ACTIVATION CALENDAR



# QUESTIONS AND COMMENTS

## 1. WHAT BUILDINGS, EVENTS, OR ICONOGRAPHY ARE EMBLEMATIC OF RIVERHEAD?

**SKOLNICK**  
ARCHITECTURE + DESIGN PARTNERSHIP



Department  
of State



# QUESTIONS AND COMMENTS

**2. WHEN YOU THINK OF CONNECTING TO NATURE, WHAT DO YOU IMAGINE DOING?**

**SKOLNICK**  
ARCHITECTURE + DESIGN PARTNERSHIP



**Department  
of State**



# QUESTIONS AND COMMENTS

## 3. WHAT AMENITIES WOULD YOU LIKE TO SEE IN THE AMPHITHEATER SPACE?

**SKOLNICK**  
ARCHITECTURE + DESIGN PARTNERSHIP



Department  
of State



# QUESTIONS AND COMMENTS

**4. WHAT ACCESSIBILITY FEATURES ARE IMPORTANT TO YOU  
AND YOUR IMMEDIATE FAMILY/FRIENDS?**

**SKOLNICK**  
ARCHITECTURE + DESIGN PARTNERSHIP



Department  
of State



# QUESTIONS AND COMMENTS

**OTHER COMMENTS? LET US KNOW!**

**SKOLNICK**  
ARCHITECTURE + DESIGN PARTNERSHIP



**Department  
of State**



THANK YOU!

**SKOLNICK**  
ARCHITECTURE + DESIGN PARTNERSHIP



**NEW  
YORK  
STATE** | Department  
of State