

## **Floor Plan Requirements**

The following will be required for **ALL** New Rental Applications

**AND**

Any Rental Renewal Applications where floor plans do not comply with the amended code as of June 2022 (see below).

**Ensure all items are checked prior to submitting your application so the process is not delayed.**

---

- Measurements must be provided **along each and every wall** (not in the middle of a page). This includes bathrooms, closets, etc.
  - **Ceiling height** must be provided in each room
  - Measurements must be provided for **every window and door (height and width)**
  - The **uses of all rooms/areas** must be identified (i.e. bedroom, bathroom, living room, kitchen, dining room, closet, laundry room, pantry, hallway, stairway, balcony, and utility room)
  - Each floor/level must be completed on their own separate page and labeled as such. **\*\*Including unfinished basements\*\***
  - Smoke detector and carbon monoxide detector locations must be provided. If combination Smoke/CO detectors are used, this must be noted on plans
  - All floor plans must be drawn with a **straight edge and drawn to scale** (For Example: 1 box =1 foot). Please note scale on plans
  - Exterior outline and dimensions **must** reasonably match the **property survey**
- 

Floor plans do NOT need to be completed by a design professional (architect). You may do your own using graph paper, **as long as all of the above requirements are met.**

If you decide to submit architectural floor plans, make sure **all of the above requirements are met.** (i.e. visible measurements must be provided along each wall)

**\*Proposed plans are not acceptable\***

**\*\*Please note:** If there is more than one (1) rental unit (A, B & C, Upper & Lower, 1<sup>st</sup> Floor & 2<sup>nd</sup> Floor, Main House & Apartment/Cottage/Garage/Trailer, Etc.), **each unit requires its own, separate floor plan.**

**ALL PLANS MUST BE legible, not oversized, up to date/match the current layout & contain all required information.**







# - 2ND FLOOR

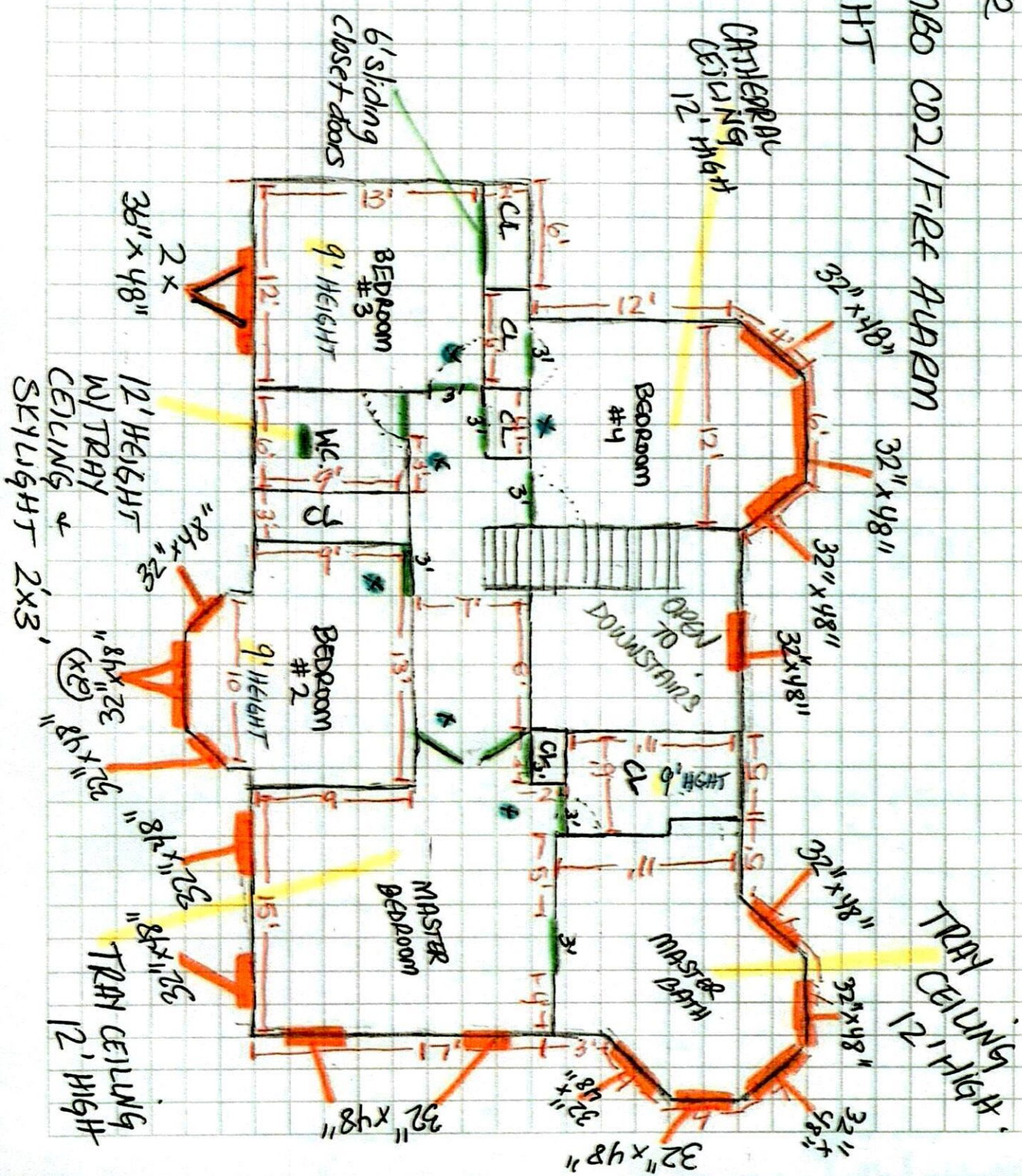
1 Block = 2'

= WINDOW

= DOOR

X = COMBO CO2/FIRE ALARM

= HEIGHT





A circular orange stamp, likely a library or archival mark, is located in the upper right corner of the page.

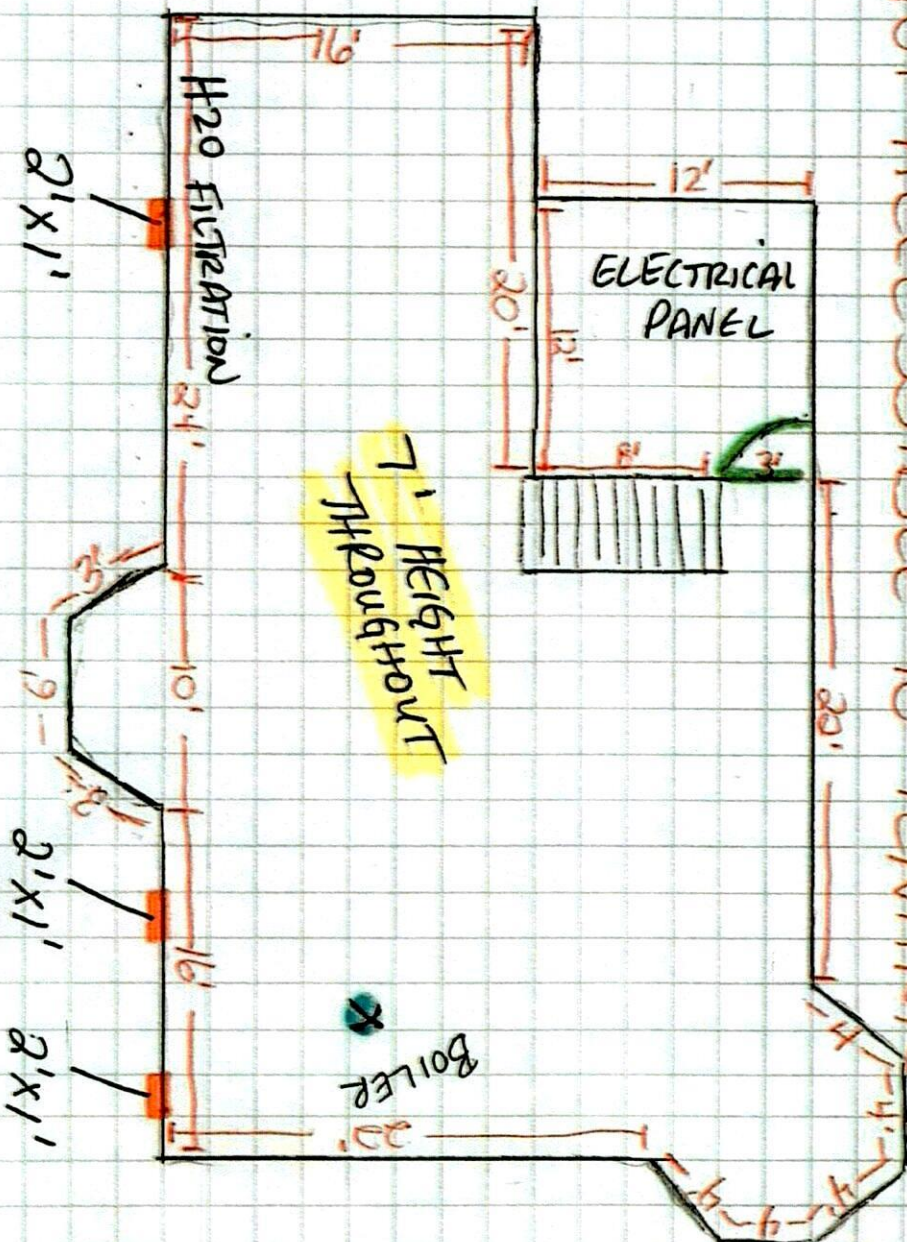


1 Bus

# Basement level

NOT FOR OCCUPANCY

NOT ACCESSIBLE TO TENANTS



1 Block = **2'**



